

**Olmec OP800 Mac OS X Printer Driver Instruction Manual**  
**Rev.1.0**

- Index -

1. Installation of the Printer Driver .....	2
2. Registration of the Printer.....	3
3. Descriptions of Printer Driver features.....	5
4. Pop-up functions for error .....	8
5. Applicable OS versions .....	9
6. Recommended PC conditions .....	9
7. Restrictions .....	10

## 1. Installation of the Printer Driver

- Please take following steps to install Printer Driver and to register Printer.

(1) Set the media which the Printer Driver Installer [OP800 Installer] is contained.

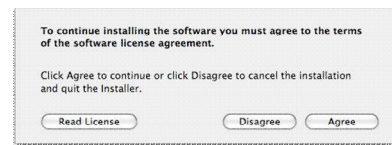
(2) Execute Printer Driver Installer [OP800 Installer] from the media that contains the Installer and click [Continue].



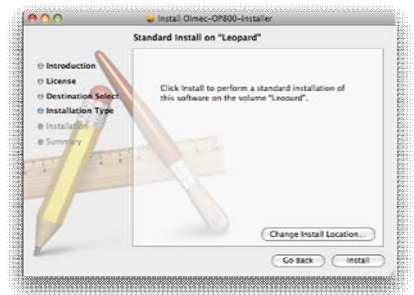
(3) [License Agreement] will be displayed. Read the License Agreement. If you agree, click [Continue].



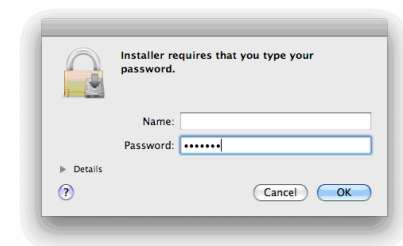
(4) A message asking you if you agree with the terms of the License Agreement. Click [Agree].

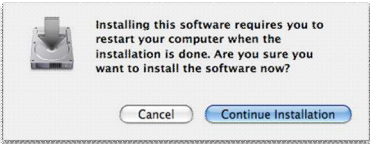
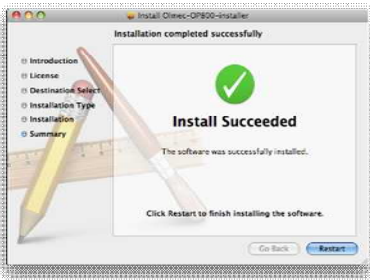


(5) Click [Install]

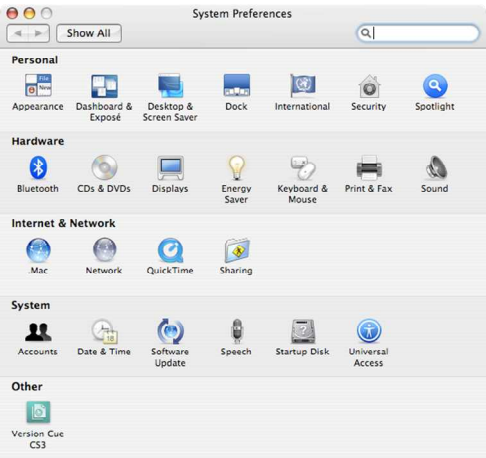
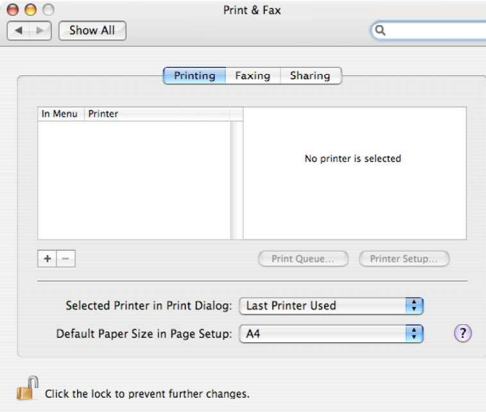


(6) Password for the administrator will be requested. Enter the password.

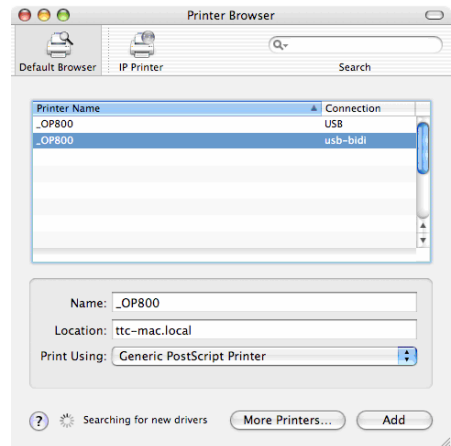


(7)	A message will appear asking you if you are sure to install the software. Click [Continue Installation].	
(8)	After a while, installation will be completed. Click [Restart] to reboot the OS.	

## 2. Registration of the Printer

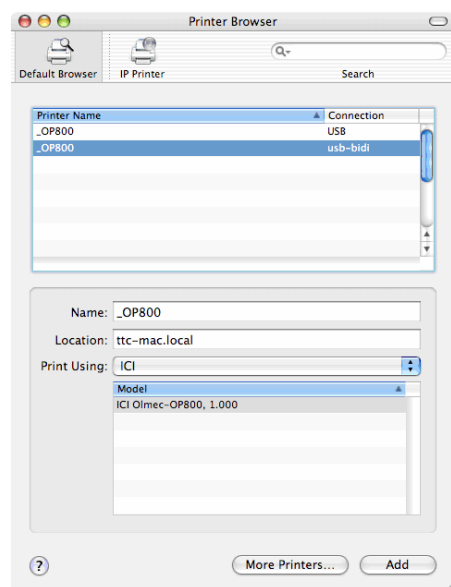
(1)	Turn on the printer power. Connect PC and the printer by USB cable.	
(2)	Open [Print & Fax] setup screen [How to open Print & Fax] <ul style="list-style-type: none"> <li>• Open application menu from Finder.</li> <li>• Click [System Preferences].</li> <li>• Click [Print &amp; Fax].</li> </ul>	
(3)	Click [ + ] to add Printer.	

- (4) Printer Browser will appear on the screen. Select [\_OP800] Printer whose connection is shown as [usb-bidi].
- It will also function if you select USB ( USB Standard Driver ) . However, in this case, error pop-up will not function.
  - It may take awhile until [usb-bidi] comes on the screen as Connection.

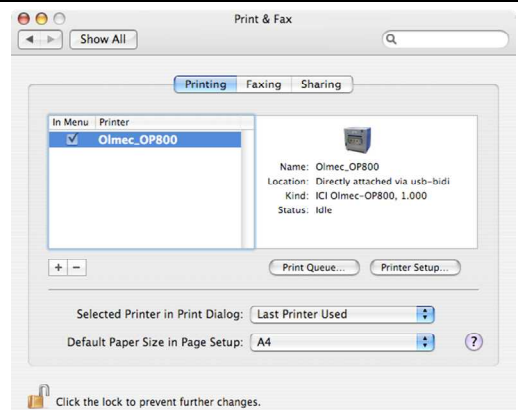


- (5) Change name to [OP800].

- (6) Select [ICI Olmec-OP800] at Print Using and click [Add].



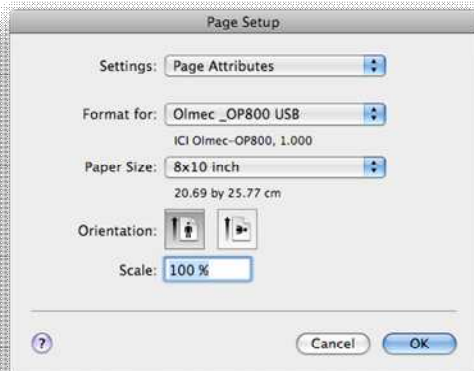
- (7) This should add the Printer as shown.



- With Mac OS X 10.4(Tiger), Printer Registration may be performed in almost the same manner although some of the screen differs from above.

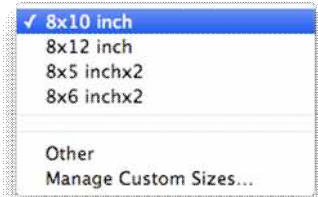
### 3. Descriptions of Printer Driver features

#### Page setup

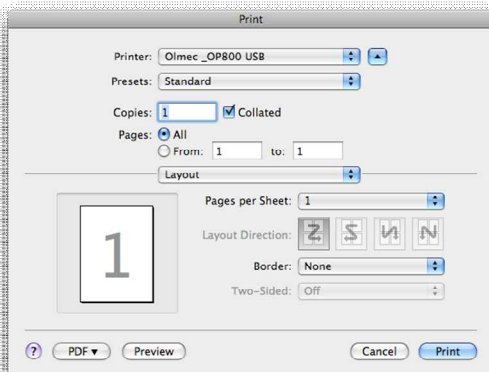


Select print size. It is necessary that the print size set here matches the ink ribbon/paper actually set at the printer.

[Olmec OP800]  
 "8x10 inch" (Default)  
 "8x12 inch"  
 "8x5 inchx2"  
 "8x6 inchx2"



#### Copies and Page



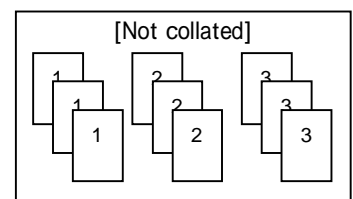
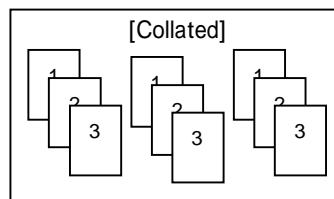
[Copies]

Set the number of print copies

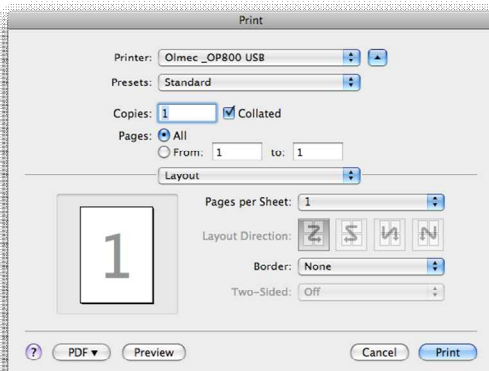
[Collated]

Specify in what print sequence copies shall be made. When marked on [Collated], prints will be made as collated sequence.

Example: 3 copies each of 3 pages are printed.



#### Layout



[Page]

All : All pages will be printed.

From: To: : Specified range of pages will be printed.

[Pages per sheet]

Multiple images will be combined into one page. Number of images combined into one page may be selected from 1, 2, 4, 6, 9, or 16.

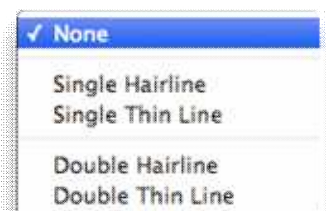


[Layout Direction]

Positions of combined images are set.

[Border]

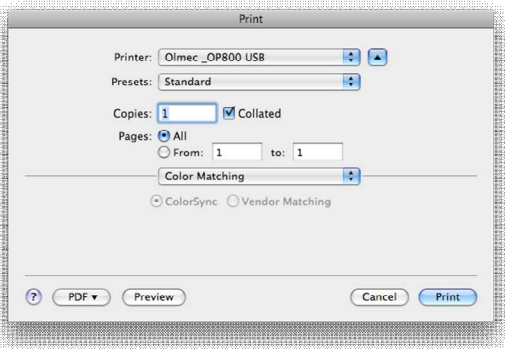
Border lines between combined images may be drawn. Selection among no line, single hairline, single thin line, double hairline and double thin line may be made.



[Two-Sided]

Two-Sided print is not possible.

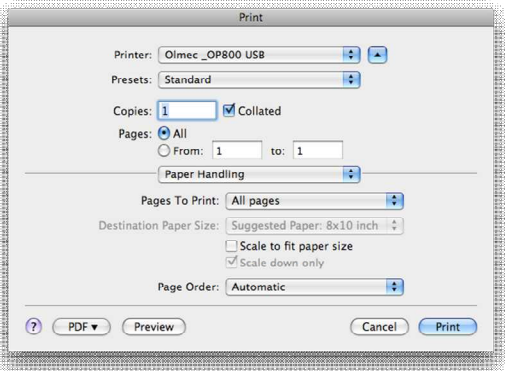
## Color Matching



[Color Sync]: Selection cannot be altered.

- Please make the color matching at the application such as Photoshop.

## Paper Handling



Pages to Print

[All pages]: All pages will be printed.

[Odd Only]: Odd numbered pages will be printed.

[Even Only]: Even numbered pages will be printed.

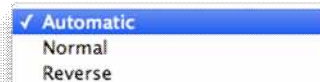


Page Order

[Automatic]: Printed in the sequence of the page order.

[Normal]: Same as Automatic.

[Reverse]: Printed in reversed sequence of the page order.

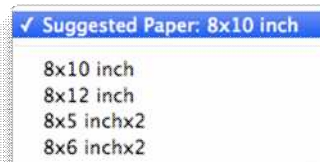


Destination Paper Size

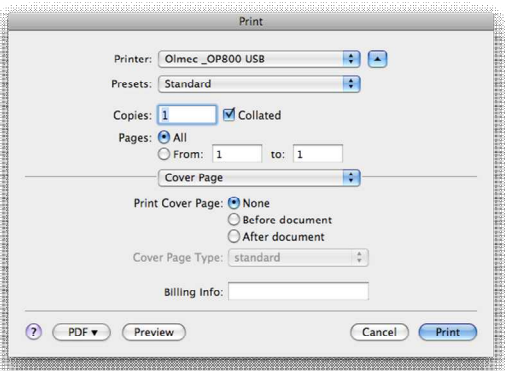
[Destination Paper Size]: Print is made on the specified paper size.

[Scale to fit paper size]: Adjust image to the selected paper size to print.

[Scale down only]: When marked, scale down image if needed to match the paper size to print.



## Cover Page



Print Cover Page

[None]: Cover Page will not be printed.

[Before document]: Cover Page will be printed first.

[After document]: Cover Page will be printed at the end.

Cover Page Type

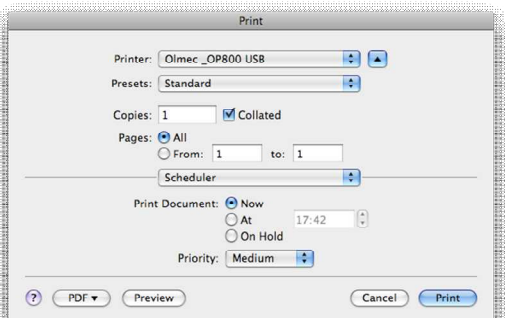
Cover Page Type may be selected from among choices shown.



Billing Info: Entered billing data will be printed on Cover Page.



## Scheduler



## Print Document

[Now]: Printing will start immediately.

[At]: Printing will start at the specified time.

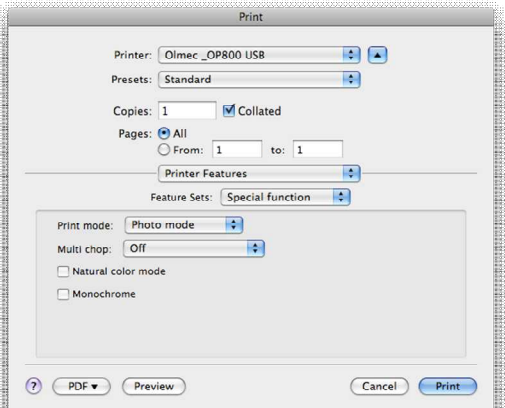
[On Hold]: Printing will be kept on hold (Printing will not start until resumed).

## [Priority]

When there are pending print orders, it is possible to alter print priority. Selection among Urgent, High, Medium (default) and Low is possible.



## Special function



## [Print mode]

Photo mode: Soft gradation gamma will be selected for printing.

Grafic mode: High contrast gamma will be selected for printing.

## [Multi chop]

Off: Multiple chop is not activated.

In half(with slug): Cut into two parts at the middle with a slug.

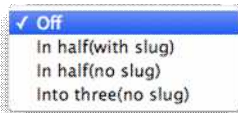
In half(no slug): Cut into two parts at the middle without a slug.

Into three(no slug): Cut into three parts without slug.

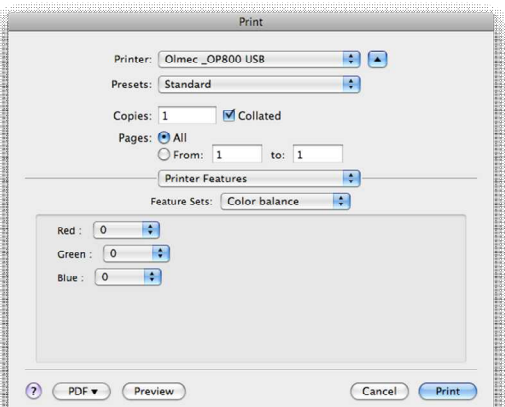


## [Monochrome]

When marked, print will be made in black and white.



## Color balance



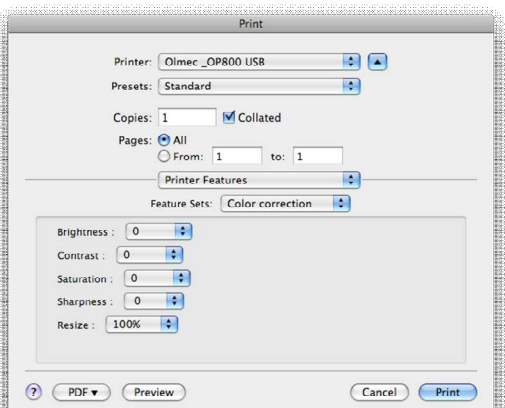
Color balance: Alter image color

[Red] (Cyan): (Cyan) -10 to 0 to +10 (Red)

[Green] (Magenta): (Magenta) -10 to 0 to +10 (Green)

[Blue] (Yellow): (Yellow) -10 to 0 to +10 (Blue)

## Color correction



[Brightness]: Alter brightness of the image.

(Dark) -10 to 0 to +10 (Bright)

[Contrast]: Alter contrast of the image.

(Low)-10 to 0 to +10 (High)

[Saturation]: Alter saturation level of the image.

(Low) -10 to 0 to +10 (High)

[Sharpness]: Increase or decrease the sharpness level of the image.

(Decrease) -4 to +4 (Increase)

[Resize]: Enlarge or scale down the image.

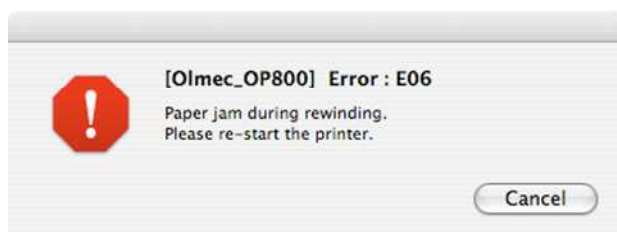
(Reduce) 90% to 100% to 110%(Enlarge)

## 4. Pop-up function for error

### Error message

- When an error is caused, a pop-up message shown below will appear on the screen.
- Clicking [Cancel] will cause job to be deleted and Printer will be ordered to stop printing.

Error	Displayed message
E00	USB Communication Error
E01	Print head does not work. (up)
E02	Print head does not work. (down)
E03	Please check the position of ink ribbon
E04	Error in head controller.
E05	Paper jam during feeding.
E06	Paper jam during rewinding.
E07	Paper cutter is abnormal.
E08	Internal command error.
E09	Error in writing flash ROM.
E10	Failure in power supply.
E11	Failure in grip roller movement.
E12	Please check the room-temperature thermistor.
E13	Please check the room-temperature thermistor.
E14	Please check the print-head thermistor.
E15	Please check the print-head thermistor.
E16	Error in writing EEPROM.





## Warning message

- When there is a warning error, an error pop-up message as shown below will appear on the screen.
- Printing will resume when the cause of the error is removed.
- Clicking [Cancel] will delete the print job and Printer will be ordered to stop printing.

Error Number	Displayed message
W51	Ink ribbon run out. Please replace an ink ribbon.
W52	Please place a proper size of paper and ink ribbon. Also, check paper size setting of the printer driver.
W53	Front door is open. Please close a door.
W54	Ink ribbon is not set. Please set an ink ribbon.
W55	Paper roll is empty. Please replace a paper roll.
W56	Paper is not loaded properly. Please re-set a paper roll into a printer.
W57	Please place a proper size of paper. Also, check paper size setting of the printer driver.
W58	Front door is open. Please close a door.
W73	Failed to detect the ribbon mark. Please check the ink ribbon.
W78	Ink ribbon is abnormal. Please try printing again.
W79	Head unit position is abnormal. Please try printing again.



## 5. Applicable OS versions

Mac OS X 10.5 Leopard

- Installation on Mac OS X 10.4 (Tiger) is possible and the Driver will function. However, there are some limitations in the function of the Driver when used with Mac OS X 10.4 (Tiger).
- The Driver does not function with Mac OS X 10.3 (Panther) and earlier versions.

## 6. Recommended PC conditions

PC	Apple PC to meet required conditions of the applicable OS version.
CPU	As required for applicable OS version.
RAM	1GB or more
HDD	Available memory space of 2GB or more.
Other	OS must be able to function without difficulty.

- PC conditions must also meet the requirement of the application software when application software is used.
- Operation may slow down when conditions are not sufficient to meet recommended conditions.

## 7. Restrictions

Please note that there are following known restrictions with the current version Printer Driver.

When more than one printer of the same model are connected, there is no control to which printer the print job will be ordered next (for example, if two of OP800 are registered, print will be made to either one that is first recognized).	At the moment, it is not possible to control multiple printers of the same model. Please connect only one Printer of the same model.
After installing the Driver on Mac OS X 10.4, if OS is rebooted and then the Printer is connected, [usb-bidl] will not come up on the screen.	This is a problem with 10.4 (Tiger). It will function correctly if you connect Printer by USB before rebooting. With 10.5 (Leopard), it functions correctly even when Printer is connected after rebooting.
When printing with iPhoto, switching repeatedly between Details and Standard will cause a situation that entering Copies/From/to may not be possible.	This is a problem with 10.4 (Tiger). It is possible to enter Copies at main screen. There is no problem with 10.5 (Leopard).
When printing with PhotoShop, Copies may not entered at the Driver menu. Copies may be entered only at the main screen of PhotoShop.	This is a problem with 10.4 (Tiger). It is possible to enter Copies at main screen. There is no problem with 10.5 (Leopard).
If the printer name is changed, the printer name of the error pop-up does not reflect the change. At printing, icon will be displayed but the icon name does not reflect the change in the printer name.	Cue name created when Printer was first registered is referred. Cue name may not be changed after registering the Printer. To change Printer name, it is necessary to re-register Printer.
Japanese letters may be entered for Billing Info. However, printed Japanese letters become deformed.	This comes from OS. Please do not use Japanese letters.
Any number may be entered for Copies.	This comes from OS. Printer will limit the Copies at 99. Maximum number of Copies allowed is 99. (This is the upper limit that the Printer Software is designed to handle).
Any number may be entered for Billing Info.	This comes from OS. Please avoid entering data that is not necessary.